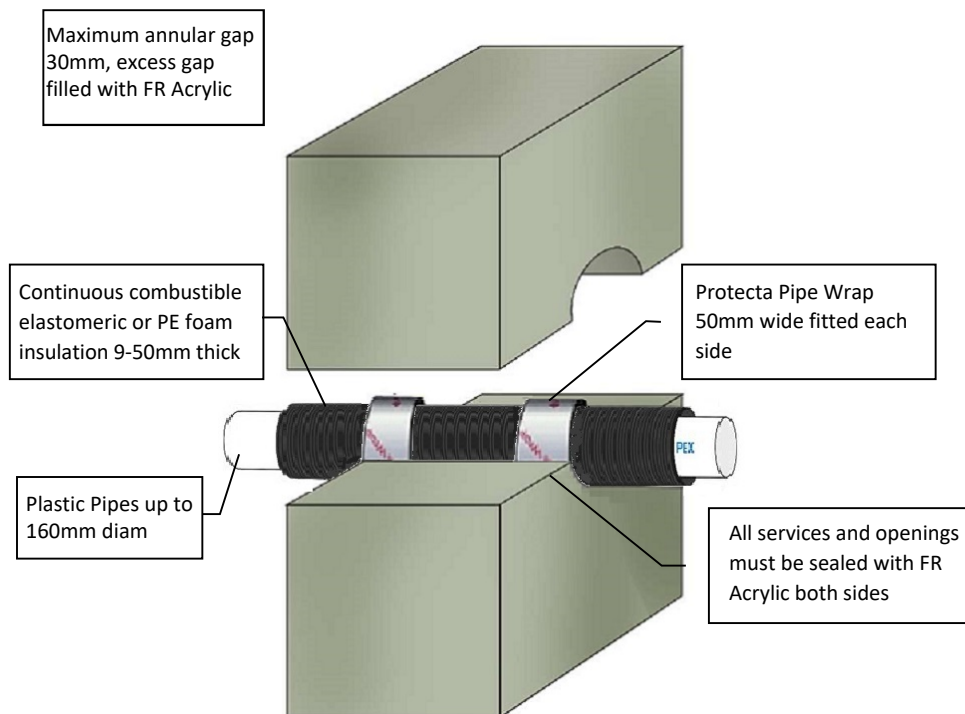


## Protecta FR Wrap - Concrete Wall 100mm Plastic Pipe with Combustible Insulation PP, PE, PE-HD, PEX, PP-R

### Installation Instructions

1. Before installing Protecta® FR Pipe Wrap ensure that the surface of all service penetrations and surrounding construction is free from all loose contaminants, dust and grease.
2. The FR Pipe Wrap should be flush with the surface of the wall on both sides.
3. Maximum annular space of 30mm with all remaining annular gap to be filled with Protecta® FR Acrylic to the full depth of the wall. This will also ensure a smoke tight seal.



System/FPA Register ID# FC583

<b>Products</b>	Protecta FR Pipe Wrap Protecta FR Acrylic
<b>Application</b>	Fire stopping of plastic pipes with combustible insulation in core-drilled concrete walls
<b>Construction</b>	Minimum wall thickness of 100mm and comprise concrete, aerated concrete or masonry, with a density of $\geq 650$ kg/m <sup>3</sup>

### Fire & Sound Classification

For 100mm thick walls:

PE, PE-HD, PEX, PP, PP-R, PP-H, PP-MV and similar pipes up to 160mm diam with 9 - 50mm thick Elastomeric or PE Foam insulation:

Pipes up to 68mm diam (inc insulation) - wrap with 2 layers 50mm Protecta FR Wrap each side  
 FRR -/60/60

Pipes up to 178mm diam (inc insulation) - wrap with 6 layers 50mm Protecta FR Wrap each side  
 FRR -/60/60

Pipes up to 260mm diam (inc insulation) - wrap with 10 layers 50mm Protecta FR Wrap each side  
 FRR -/60/60

As a part of our policy of on-going product development and testing, we reserve the right to modify, alter or change product specifications without giving notice. All information contained in this document is given in good faith and is provided for guidance only. Any drawings provided are for illustrative purposes only. As Polyseam has no control over the methods or competence of installation and of prevailing site conditions, no warranties, expressed or implied, is intended to be given as to the actual performance of the product mentioned or referred to herein and no liability whatsoever will be accepted for any loss, damage or injury arising from the use of the information given.

Sound reduction (seal only) STC 55

Sheet size: **A4**  
 Drawn date & no: 20/4/21

Scale: **NTS**  
 Drawn by: K.B